

Wyn Vogels Material Requirements.

Please provide a materials list for participants:

- At least 2 sheets Arches 300gsm fine grain Watercolour Paper, and
- And some smaller sheets of watercolour paper to try out ideas – again experimental so these can be scraps from other Work if you have them!

Backing Board to fit a half sheet.

PAINTS | Watercolour Paint – Watercolour Pencils – Watercolour Inks –

but please bring whatever colours you have in your kit:

- Ultramarine Blue
- Indigo – We recommend Winsor & Newton brand for tone
- Cadmium Yellow – **Deep**
- Phthalo Blue
- Raw Sienna
- Quinacridone Gold
- Australian Red Gold
- Alizarin Crimson and/or Deep Cadmium Red – or similar colours

Brushes – at least those below –

but please bring whatever brushes you have in your kit:

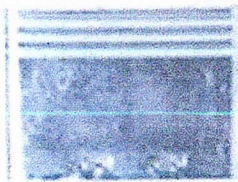
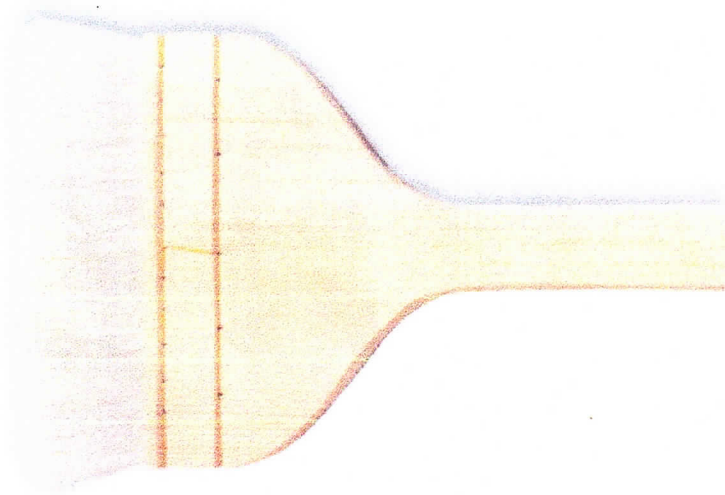


At Least 1 of each brush below –

more will help you:

- 1 each x 1/2 inch and 3/4 inch Angle Shader
- 1 x wide wash brush at least 2 inches in width – for wet work, we recommend the **2 inch Art Spectrum Soft Varnish Brush** – I would recommend you have at least 2 with you, and
- 1 x wide dry brush at least 2 inches in width – feel it with your hand and make sure it is very soft Goat Hair recommended – for dry work –
- 1 x Squirrel Needle point or Chinese style calligraphy brush for detailed line work and layering of your colours – we recommend No10 – NEEF Squirrel Needle Point – see the images below and on the cover photo for guidance!





Other Tools: